

STORM
THE CASTLE
DUATHLON



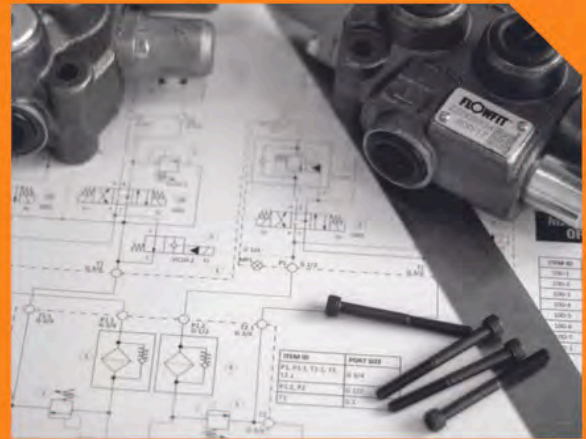


QUEEN

STORM
CASTLE
Full Course
3rd Female
2024

RAD

BRITISH
TRIATHLON
KITAHIM

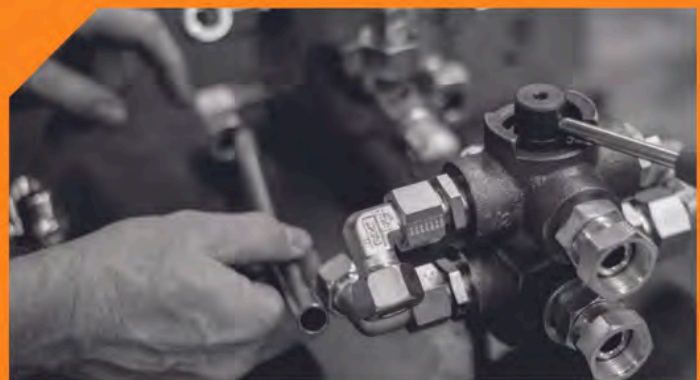


Hydraulic System Design and Custom Manufacturing

Flowfit offers both standard and innovative custom-built hydraulic solutions.

Global Distribution

Flowfit is a market leader in the distribution of hydraulic parts, with trading partners across the globe.





Welcome

Welcome to Storm The Castle 2026! Whether this is your first time taking on this brilliant event or you're a seasoned Stormer, we're absolutely delighted to have you join us for another unforgettable adventure.

For this year's event, we're excited to bring the race into the historic grounds of Ludlow Castle, a spectacular setting that will make this edition one to remember.

We want to ensure you arrive fully prepared, and this Athlete Guide is designed to answer any questions you may have, along with a few you might not have considered.

There is some important race information included, so please take the time to read this guide carefully.

Don't forget to arrange your British Triathlon Race Pass ahead of race day.

We are incredibly fortunate to host this event, and it wouldn't be possible without the support of our amazing main sponsor Flowfit and the many other partners who help bring this fantastic event to life. We truly couldn't do it without them.

Finally, we wish you the very best of luck on race day and look forward to cheering you across the finish line as you 'Storm The Castle'.

Andy and Harriet



ANDALI EVENTS

Storm The Castle Duathlon is promoted by Andali Events.
All information correct at time of going to press.
The organisers reserve the right to change any aspect of the event if necessary, due to unforeseen circumstances.

Contents

Pre-Race Information

Timeline of Race Day	6
Key Addresses	7
Getting to Ludlow	7
Car Parking	7

Race Day Information

Registration	11
Timing Chip	11
Transition	11
Toilets.....	11
Transition - Bag Drop	13
Race Briefing	13
Relay Team Specifics	14
Rules & Regulations	16
Regal Hierarchy	18
Race Courses	20
Wristbands	23
Site Map	25
Run 1 Route Map	26
Bike Route Map	27
Run 2 Route Map	28
Withdrawal From Race	29
Aid Stations	29
Littering	29
Finish Line / Athlete Area	29
Equipment Checklist	30
Spectators	30
Watching the race	31

Post-Race Information

Results	32
Prize Giving	32



ACCOUNTS

TAXATION



PAYROLL



CLOUD SOFTWARE



HERE TO HELP
WITH ALL YOUR
ACCOUNTANCY
NEEDS




01584 811686




www.dhjhtw.co.uk



info@dhjhtw.co.uk



81/83 Teme Street
Tenbury Wells
Worcestershire
WR15 8AE



dhjh Tenbury Wells LLP
Chartered Certified Accountants



Pre-Race Information

Timeline of Race Day

****Please note registration is on Sunday only.****

Sunday 17th May

TIME	EVENT	LOCATION
0600	Registration and race pack pick-up	Ludlow Castle
0600	Transition opens	Ludlow Castle
0730	Transition closes	Ludlow Castle
0745	Race briefing and warm up	Ludlow Castle
0800	Race begins	Ludlow Castle
1000 (approx)	1st athletes finish	Ludlow Castle
1120 (approx)	Prize giving awards ceremony	Ludlow Castle
1145 (approx)	Final athletes finish	Ludlow Castle

****For details about parking, see page 7****



Pre-Race Information

Key Address

Ludlow Castle – Castle Square, Ludlow, SY8 1AY

Getting to Ludlow

On race day you will need to access Ludlow by car. Ludlow is situated on the A49 trunk road which runs from Warrington, through Shrewsbury and Hereford to Ross-on-Wye. From Birmingham, head west on the A456 through Kidderminster. From the M5 leave at junction 3 and continue on the A456 through Kidderminster. Please allow plenty of time to get to the race in the morning.

Car Parking

Parking is available at [Castle Street car park](#) which is half price on a Sunday (£0.70 per hour between 0800-2000). The charge does not begin until 0800, so if you arrive at 0600 and pay for four hours (£2.80) it will actually last for 6 hours until 1200. Payment is by cash, card or through the MiPermit parking app. This car park is a two minute walk from Ludlow Castle.

There is additional free parking on a Sunday at [Upper Galdeford car park](#), [Lower Galdeford car park](#), and [Smithfield car park](#) which are between a 10 and 15 minute walk to the castle.



PROUD TO SPONSOR STORM THE CASTLE




PEARCE CYCLES


Here at Pearce Cycles we offer a vast range of BIKES and ACCESSORIES, MOUNTAIN BIKING and ROAD RIDING as well as KIDS' BIKES, ELECTRIC and HYBRID. Plus a range of HIRE BIKES and TEST BIKES.

With over 20 years of cycle knowhow, we provide an excellent service with knowledgeable staff and full workshop services.

MERIDA 

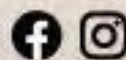
 **SPECIALIZED**

 **FROG
DIRECT**

 **Orange**

NUKEPROOF **SANTA CRUZ**

Pearce Cycles, Fishmore Road,
Ludlow, Shropshire, SY8 3DP
T: 01584 879288 / 876016
E: shop@pearcecycles.co.uk



STOP ARE YOU RACE READY?

This is a British Triathlon permitted event. British Triathlon Competition Rules require you to become a member of the sport and buy a Race Pass in order to race.

Applies to triathlon, duathlon, aquabike and aquathlon races only.

TAKE ACTION NOW

1

I am already a British Triathlon Home Nation member.

No action. Show proof of membership at registration.



2

I am not a British Triathlon Home Nation member and live in Britain.

Buy a Race Pass and show proof at registration.

BUY NOW ▶ bit.ly/BritTriRacePass



3

I am not a British Triathlon Home Nation member and live outside of Britain.

FIND OUT MORE NOW ▼

bit.ly/BritTriRacePass



For further information please email
racepass@britishtriathlon.org

Shropshire's Leading Leisure Provider

PROVIDING ALL YOUR LEISURE NEEDS IN SHROPSHIRE

FACILITIES INCLUDE:

-  LUXURY SPA
-  FULLY AIR CONDITIONED FITNESS SUITES
-  SWIMMING POOLS
-  DANCE/EXERCISE STUDIOS
-  SPORTS HALLS
-  TENNIS COURTS
-  ASTRO TURF
-  CRICKET NETS

TEME LUDLOW

Bromfield Road
Ludlow SY8 1DR
01584 874620

TEME CLEOBURY

Love Lane
Cleobury Mortimer
DY14 8PE
01299 271317



Members
options available
from just
90p per day!



VISIT OUR WEBSITE OR APP FOR TIMETABLES AND MORE INFO



DOWNLOAD OUR APP

ANDROID APP ON
Google play

Available on the
App Store



www.teme-leisure.co.uk



Race Day Information

Registration

You will be able to register and pick up your race pack on Sunday 17 May 2026 from Ludlow Castle between 0600 and 0730.

When you arrive at registration you must bring with you a form of picture ID and a copy of your Race Pass or British Triathlon membership (see page 10 for details)

IMPORTANT

Please fill in your contact and medical details on the reverse of your race number.

At registration you will be issued with the following:

- 1 x Race number

****Please note that as you will only be issued with 1 x race number then YOU MUST USE A RACE BELT DURING THE RACE****

- 1 x timing chip

- ID bike and helmet stickers

****Please place helmet sticker at the front of your helmet facing forwards****

- ID wristband

Timing Chip

You will receive your timing chip as part of your registration pack. This **MUST** be worn around your **LEFT** ankle during the whole race. When you have finished the race you must ensure that the timing chip is handed back to the marshals.

Please note, if you lose the timing chip you will be charged £5.

Transition

Access to the transition area will open at 0600 on race morning. You will need to show your wristband and race numbers to access transition. Only athletes will be allowed to access the transition area.

Access to the transition area to set up for the race will close at 0740.

Any valuables left in the transition area will be left at your own risk.

Toilets

There are toilets at Ludlow Castle and these will be open all day. There will be no toilets on the race course. If you need the toilet during the race you must use a public toilet or wait until you get back to transition where you can use the toilets located within the castle.

WICKED REMOVALS & STORAGE

01584 872398



WWW.WICKEDVANHIRE.CO.UK



Wicked Removals

At Wicked we take great pride in what we do, customer satisfaction is our top priority. Our reviews on google for both "Wicked Van Hire" and "Wicked Removals" evidence the high-quality service that we provide with an average rating of 4.8 stars with 85 reviews on "Wicked Van Hire" alone.

With all local moves we offer a free house viewing service where, upon completion, we provide a full quote, we have over ten years' experience, top quality new vehicles, equipment, very low turnover of staff, are fully insured, and hold a waste carrier licence.

From multiple day moves to smaller flat relocations we can do all types of removals.

Our Services

Full House Removal, House Clearances, Man and Van, Storage, Self-drive Hire, House Cleaning, Handyman Services, Gardening and Light Landscaping, all services are fully insured.

House Clearances

At Wicked we aim to minimise waste and operate a zero-landfill policy. Where possible we donate items to various charities that we have teamed up with, mainly the Ludlow Ukrainian Support Group and the Rural Charity Furniture Shop. We have a dedicated storage unit for these goods as sometimes demand from the charities is sporadic and this ensures that they will have constant access to these items. Where it is not possible to donate these goods, all other waste is taken to the Quick Skip depot in Hereford where they operate a zero-landfill policy also.

House Cleaning Services

We offer simple dusting and vacuuming to full deep cleaning including carpet washing, oven cleaning fridge and freezer cleaning. This is ideal to fully prepare a house for resale.

Handyman Services

From painting and decorating to joinery work, Gardening/Landscaping

From simply cutting the grass to clearing overgrown garden and even brickwork and paving repairs.

Full House Moves

With a large fleet of brand-new vehicles available to us, we are more than capable of all types of house removals, even international moves. We have over 10 years of experience and have completed moves to Spain, Germany, Denmark, France, Italy, and Belgium to date.

Storage

We offer a range of storage options to our customers, from indoor 15m³ units all the way up to 20ft containers spread across 3 sites within Ludlow.

We are fully insured, and VAT registered.



Race Day Information

Transition - Bag Drop

The race officials within the transition area will guide you on which row to rack your bike and set up your transition space. Only items that will be used during the race will be allowed to remain by the competitor's bike. All other items must be returned to your vehicle or left with a spectator.

There is a 'Bag Drop' area within the castle grounds where competitors can leave their transition bag/ box and this will be clearly visible. One of the stickers in your registration pack can be stuck onto your bag. The bag drop area will be marshalled during the race and any bag left in the bag drop area must have your race number sticker that matches your race number. All bags are left at the owners risk, the organisers cannot be held responsible for items that are lost/stolen.

Race Briefing

There will be a full race briefing on race morning. The briefing will take place near the start line at 0745. This briefing will include specific safety measures in place on the course to ensure that all athletes have a safe race experience. Please ensure that you do attend the race briefing.

There will be time after the race briefing for you to conduct your own warm up.

Start Time

There will be a mass start at 0800, using a self-seeding system, with faster athletes at the front.

Mount/Dismount Line

The mount / dismount line for the bike course will be located on the road outside the castle grounds. Athletes must push their bike along the transition funnel and through the castle gate until they reach the mount line. At the end of the bike route, cyclists must dismount at the line and push their bikes back to transition. Marshals will be on hand to advise you.



Race Day Information

Relay Team Specifics

All relay teams need to be aware of the specific differences in their event. This information must be shared with the whole team:

- There will be only 1 race number and 1 timing chip per team. The race number must be attached to a race belt, and the timing chip **MUST** be worn on the left ankle. The race belt along with the timing chip act as your baton. Both items are passed between team members at the handover point.
- There will be a specific area within transition designated for the handover of timing chips and race numbers. The team members must wait in the handover area for their team mate to bring them the race number and timing chip.
- The cyclist must ensure that their bike is securely racked before moving to the handover area and passing the race number and timing chip to their teammate.
- On finishing the race the relay team members will be allowed to congregate at the beginning of the finishing chute and run across the line together

ATRIUM

Hardwood
Orangeries | Conservatories
Windows | Doors



The Old Foundry, Victoria Road, Kington, Herefordshire. HR5 3DA

TEL 01544 231769

sales@atriumhereford.co.uk

- Local business with over 40 years experience
- FREE survey & quotation,
- Bespoke high quality hardwood manufacture
- In-house installation and building work service
- Extensive choice of long lasting finishes

Proud sponsors of

 ANDALI EVENTS



WWW.ATRIUMHEREFORD.CO.UK



FENSA
Registered Company



Race Day Information

Rules & Regulations

Storm The Castle will operate under the rules of British Triathlon. [Click to view the British Triathlon Rules](#) for full details.

The following are prohibited during the race:

- **Abuse of a race official, volunteer or member of the public**
- **Littering outside of the marked areas at feed stations**
- **Use of music player, headphones, mobile phone, camera, video, listening or recording device**
- **Failing to use appropriate toilet facilities**
- **Nudity or indecent exposure**
- **Dangerous riding: including crossing the centre line, overtaking on the wrong side**
- **Drafting – riding within the designated draft zone**
- **Failure to fasten the helmet securely during the bike phase**
- **Blocking, riding before the mount line or after the dismount line**
- **Failure to clearly display your race number to the back during the bike leg**
- **Failure to clearly display your race number to the front during the run legs**
- **Running without shoes during any part of the run phase**
- **Being accompanied by spectators down the finish line**
- **Failure to clearly display your race bike number to the front**

Please be aware that failure to comply with these rules may result in disqualification.

THE
VISUAL
WORKS

BRANDING
BROCHURES
WEBSITES

Tackling design challenges
& winning awards since 1995

The image displays a variety of design projects. On the left, a website for 'SOURDOUGH PIZZA BY CSONS' is shown on a desktop and mobile device, featuring a vibrant, colorful layout with images of pizzas. Below it, a laptop screen shows the '2023 Gift of the Year Awards' website, which has a clean, modern design with product images. To the right, a large poster for the 'LUDLOW SPRING FESTIVAL' is held up, featuring a group of people and the text 'FUN, FEASTING, 150+ BEERS, LIVE MUSIC, COMEDY, TALKS, KIDS ACTIVITIES & MOTORS AT THE LUDLOW RUGBY CLUB 12TH, 13TH & 14TH MAY 2023'. At the bottom right, four bottles of Ludlow beer are lined up, with labels for 'GOLD', 'STAIRWAY', 'BLACK KNIGHT', and 'RED DAWN'.

visualworks.co.uk



Race Day Information

Regal Hierarchy

We know how tough Storm The Castle is and that finishing the race is a huge achievement, but what if there was even more on offer. What if you could call yourself 'King or Queen of the Castle'?

Well now you can, and here is how it works. We operate a system of Regal Hierarchy whereby each year that you return and complete Storm The Castle you will climb the status ladder and you will receive a new title that will give you bragging rights over all of those beneath you. Once you have completed the race five times you will finally make it to the top and here is what each layer looks like:

- 1 completed event = Peasant**
- 2 completed events = Knight**
- 3 completed events = Baron / Baroness**
- 4 completed events = Duke / Duchess**
- 5 completed events = King / Queen**
- 5+ completed events = LEGEND**

NB Please note that this only relates to athletes completing the race as an individual on the Full Course and not those taking part in the Short Course or as a relay team.





OFFICIAL **HYDRATION** PARTNER



It's in our nature



@radnor_hills



Race Day Information

Race Courses - Full Course

The race includes a 10km run, 33km bike and 5km run

Run 1 - 10km

The run is approximately a 5km loop. It is a tough and hilly run including sections of road and off road terrain. On the first run you complete 2 loops.

The first 2kms of the run is fairly flat and gets you into your stride. Then it changes!! As you enter Whitcliffe Common you encounter the 'Lactic Ladder', a near vertical set of steps that will test the strongest of runners.

Continuing around the Common, you run across a viewing area giving magnificent views of Ludlow, before descending off the Common, along The Breadwalk next to the river. Then turn right, exiting the Whitcliffe section and over Dinham Bridge. The next stage of the run takes you up 'The Wall' to the Castle.

Run around the Castle walls then retrace down The Wall to begin lap 2.

After ascending The Wall on lap 2, continue through the Castle gates back to transition.

Bike - 33km

**** Parts of the bike course are in a poor state of repair with some large potholes. Please proceed with caution, particularly on the descent to Leintwardine. ****

A challenging 33km with enough undulation to rival the hardest bike courses in the UK. This course includes approximately 500m of elevation and takes you on a route from Shropshire, into Herefordshire and back into Shropshire to finish back at transition.

The climbing comes in two main sections, including a 7km climb over Fiddlers Elbow and nearing the end of the ride, you climb through Mortimer Forest before a long, fast, descent to Whitcliffe common, before the 'sting in the tail' takes you back up to the Castle.

CAUTION!

In the final 1km of the bike course cyclists must be aware of runners and pedestrians when approaching Dinham Bridge from Lower Wood Road, and particularly ascending Dinham Hill. Please check your speed and observe any instructions from marshals to ensure the safety of fellow athletes and spectators.

Run 2 - 5km

Similar to Run 1 but without the first 2km Halton Lane section.

From Transition you'll head down the hill to Dinham Bridge and enter Whitcliffe Common and go up the 'Lactic Ladder', Continuing around the Common, you run across a viewing area giving magnificent views of Ludlow, before descending off the Common, along The Breadwalk and back to towards Dinham Bridge where you will collect a wristband before embarking on a second loop of Whitcliffe, up the Lactic Ladder and around the Common again. After their second loop of the Whitcliffe section, runners will receive a second wristband before turning right over Dinham Bridge and up 'The Wall' to Castle Square and through the castle gate to the finish line, where you will have Stormed the Castle!

CAUTION!

Runners must be aware of cyclists and pedestrians on the road, particularly ascending and descending Dinham Hill.



#LOCALLY SOURCED #GLOBALLY INSPIRED
SEASONAL FOOD AND DRINK

CSONS is a friendly cafe-restaurant sat on the river Teme serving breakfast, coffee, lunch, tea, cakes and dinner.

Our food is different; we use the best locally sourced produce and treat it with the respect it deserves by creating simple, unpretentious, globally inspired and exciting dishes that shout about the ingredients, reflect the seasons and are full of flavour.

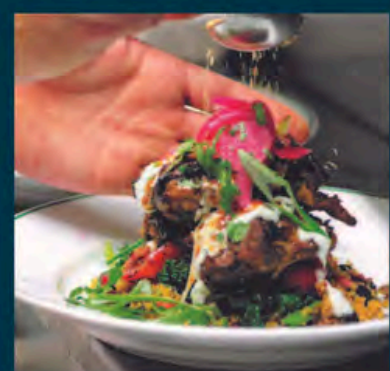
Come and check us out, we're pretty confident you'll like what you find.

We'd also like to meet you!

BREAKFAST-LUNCH-DINNER
COFFEE-TEA-CAKES

Mill on The Green, Linney
Ludlow, SY8 1EG

Tel: 01584 879872 www.csons.uk





Race Day Information

Race Courses - Sprint Course

The race includes a 5km run, 24km bike and 2.5km run

Run 1 - 5km

The run is approximately a 5km loop. It is a tough and hilly run including sections of road and off road terrain. You will complete 1 loop.

The first 2kms of the run is fairly flat and gets you into your stride. Then it changes!!

As you enter Whitcliffe Common you encounter the 'Lactic Ladder', a near vertical set of steps that will test the strongest of runners. Continuing around the Common, you run across a viewing area giving magnificent views of Ludlow, before descending off the Common, along The Breadwalk next to the river.

Then turn right, exiting the Whitcliffe section and over Dinham Bridge. The next stage of the run takes you up 'The Wall' to the Castle. Run around the Castle walls. After ascending The Wall, continue through the Castle gates back to transition.

Bike - 24km

**** Parts of the bike course are in a poor state of repair with some large potholes. Please proceed with caution. ****

A challenging 24km with approximately 350m of elevation.

The climbing comes in two main sections, the first section is a series of undulating hills between Bromfield and Elton. **There may also be some mud on the road in this section, and beware of a couple of sharp, tight bends.**

The second section is nearing the end of the ride, as you rejoin the Full Course route. You will climb up through Mortimer Forest before a long, fast, descent to Whitcliffe common, before the 'sting in the tail' takes you back up to the Castle.

CAUTION!

Cyclists must be aware of runners and pedestrians when approaching Dinham Bridge from Lower Wood Road in the last 1km of the route, and particularly ascending Dinham Hill. Please check your speed and observe any instructions from marshals.

Run 2 - 2.5km

Similar to Run 1 but without the first 2km Halton Lane section. From Transition you'll head towards Dinham Bridge and enter Whitcliffe Common and go up the 'Lactic Ladder', Continuing around the Common, you run across a viewing area giving magnificent views of Ludlow, before descending off the Common, along The Breadwalk and back towards Dinham Bridge.

At this point, runners will receive a coloured wristband, before turning right, over Dinham Bridge, up 'The Wall' to Castle Square and through the castle gate to the finish line, where you will have Stormed the Castle!

CAUTION!

Runners must be aware of cyclists and pedestrians on Dinham Bridge. Please observe any instructions from marshals to ensure the safety of fellow athletes and spectators, particularly ascending and descending Dinham Hill.



Race Day Information

Wristbands

In order to ensure that all athletes have completed the course fully, it is required that you must collect **1** wristband for the Short Course, and **2** wristbands for the Full Course during the final run. The wristbands will be passed to you by a steward and you must ensure that they are on your wrist until you finish the race.

THIS WILL TAKE PLACE ON 'THE BREADWALK' RIVERSIDE PATH. THERE WILL BE SIGNAGE TO REMIND YOU.





THE LUDLOW NUT COMPANY www.ludlownut.co.uk

PETER MEREDITH OPTOMETRIST

Eye examinations
Enhanced services
Contact lenses
Designer frames



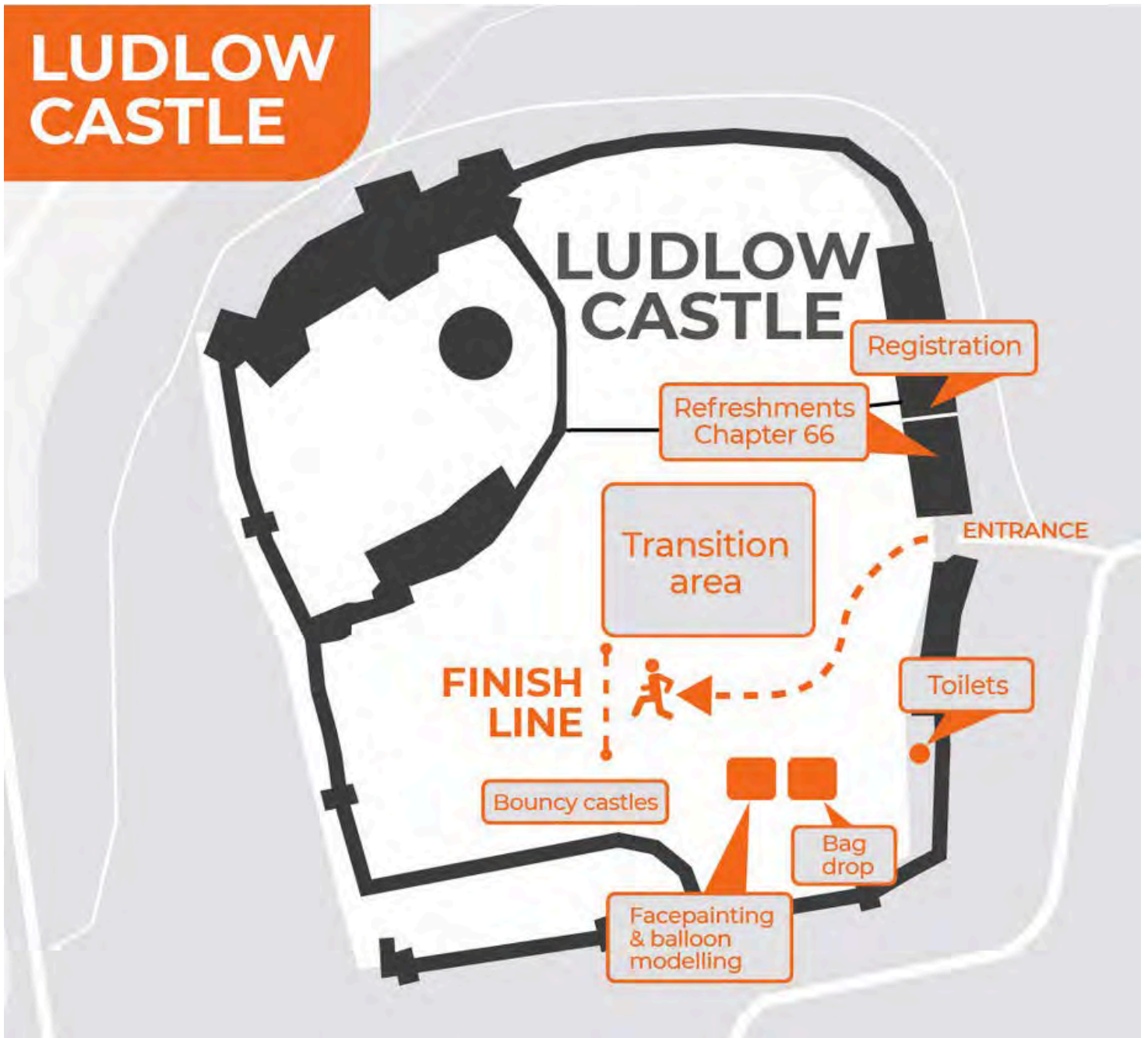
9 Church Street, Ludlow

01584 876266



Race Day Information

Site Map





Race Day Information

Course Route





Race Day Information

Course Route

BIKE COURSES

Sprint Course - 22km

Full Course - 33km





Race Day Information

Course Route





Race Day Information

Withdrawal From Race

If you have registered to race and have collected your pack but then for whatever reason decide not to race, then you must inform a race official. If you need to withdraw during the race then you must inform a race official.

Aid Stations

There will be 1 aid station on the run course at the bottom of the Lactic Ladder which will offer both water and sports drinks. There will be no aid station on the bike course.

Littering

Please be considerate of the beautiful countryside you are racing through and do not litter. During the run you will pass aid stations where there will be a bottle drop / bin. You **MUST** drop your litter here. Any athlete seen by a race official to be littering will be disqualified from the race.

Finish Line / Athlete Area

When you cross the finish line you will be able to collect your well deserved finisher's medal, t-shirt (if you requested one) and your post race goodies.

We ask that only athletes run down the finishing chute, we cannot be responsible for any accidents if athletes choose to bring their children with them to cross the finish line.

Once finished you will need to remove your timing chip and return it to a race official. Your friends and family will be able to meet you at the exit of the finish area.



Race Day Information

Equipment Checklist

We would suggest that you bring the following equipment with you on race day.

PERSONAL	RUN	BIKE	OTHER
Photo ID	Running shoes Tri suit/racing clothing Socks Sunglasses Run cap/visor Number belt	Bike Bike shoes Bike helmet Bike pump Bike tools Inner tubes	Water bottle Nutrition Post race clothes

Items in **BOLD** are mandatory

Spectators

Storm the Castle Duathlon is free to watch along the entire course.

Whilst some of the roads in Ludlow will be closed for the race, this is mainly for vehicles - pedestrians are free to watch anywhere on the course. However, please be careful when walking along the race route itself, as although the road may be officially closed, you will be sharing the road with runners and cyclists.

Please bear in mind that if you venture out to watch some of the cycle route, access and parking near the race route may be restricted when returning to Ludlow, due to road closures.

Some suggestions for where to watch the race are on the following page.



Watching The Race

Race Start & Transitions

Ludlow Castle Outer Bailey

Wave the athletes off from the start and watch them come back through each transition.

The Lactic Ladder- Whitcliffe

Starts next to the River Teme, near Dinham Bridge (opposite side from the Castle). One of the hardest parts of the course, this climb will be tackled at least twice by each athlete throughout the race.

Race Finish & Event Village

Ludlow Castle Outer Bailey

Enjoy the atmosphere of the finish area - there's plenty of room to sit and relax and there will be food and drink available to buy. After the main race, why not stay for the prize giving.

Whitcliffe Common

Limited parking available at the layby at the top of the common. After cresting the climb of the Lactic Ladder, the athletes enjoy a flatter section before descending back down to the riverside path. Enjoy the breathtaking and famous view of Ludlow.

Cycle Route

Once out of the town and onto the open roads, you can watch the cyclists anywhere along the course without the restriction of road closures.

Please note that road closures will be in place for both run routes, so access will be for pedestrians only.

IMPORTANT

Although the roads are closed to vehicles, there will be runners and fast-moving cyclists in the road, so please be careful when walking around the course. Spectators are advised to stay on the pavements and not walk on the road. Please take particular care around Dinham Hill.



Post Race Information

Results

We will be joined by [Timing Monkey](#) who will be looking after the results section. There will be a live results screen on hand to quickly find out your result. We will then aim to have a link to the full results later in the day. This will go live onto our website.

Prize Giving

A prize giving ceremony will take place at Ludlow Castle after the event has finished. We anticipate that this will be approximately 1120.

There will be prizes in the following categories:

OVERALL SPRINT COURSE AND FULL COURSE:

Open..... 1st, 2nd, 3rd

Female..... 1st, 2nd, 3rd

Relay Teams..... 1st, 2nd, 3rd

Proud to Sponsor Andali Events

**Stockholders of Materials for the
Engraving, Trophy & Sign Industry**



Engraving Brass CZ120
Stainless Steel 316
Anodised Aluminium
Trophy Plates
PB102-Copper
Zinc
ABET Rigid Laminate
Flexible Engraving Laminate
Micro, Rotary & Laserable



Processing Facilities
Precision Cut to Size Service
Bevelled Edges
Laser Cut Wood/Acrylic
LaserSpray
3m Self-Adhesive
Isopropynol
Recycled Packaging



EPG Ltd

**Unit 9 The Mynd Industrial Estate
Church Stretton
SY6 6EA**

01694 237000 - sales@engraving-products.co.uk



SEE YOU THERE